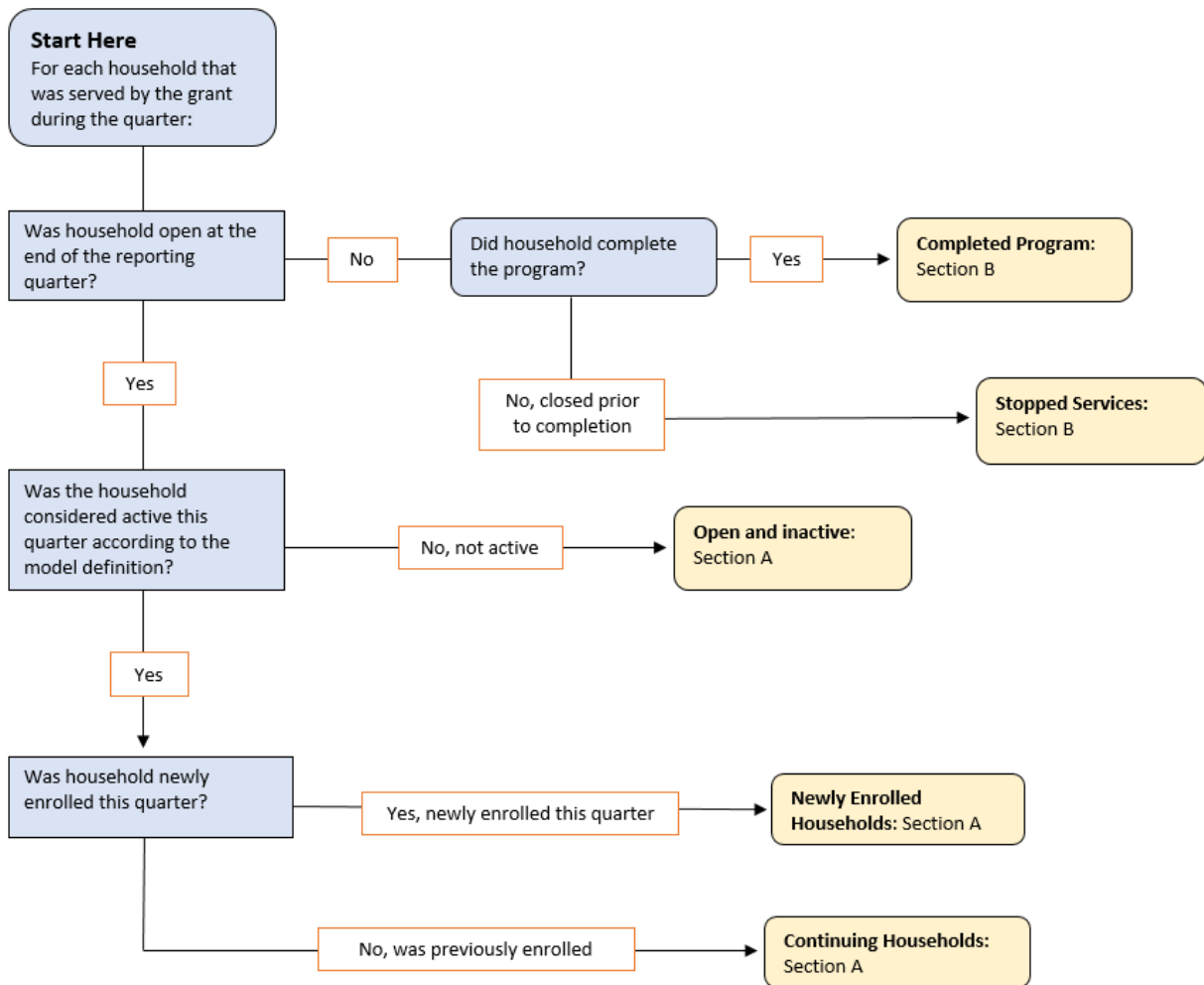


# Strong Foundations Quarterly Data Reporting Flowchart

The purpose of this flowchart is to provide support for grantees in identifying which reporting category a household would fall into for quarterly data collections.



For each household that was served by the grant during the quarter ask these questions:

## Was household open at the end of the reporting quarter?

- If no: **Did the household complete the program?**
  - Yes, household completed program: Completed Program-Section B
  - No, closed prior to completion: Stopped Services-Section B
- If yes, the household completed program: **Was the household considered active this quarter according to the model definition?**
  - No, household was not considered active this quarter: Open and Inactive-Section A

## STRONG FOUNDATIONS QUARTERLY DATA REPORTING FLOWCHART

- If yes, the household was considered active this quarter: **Was household newly enrolled this quarter?**
  - Yes, household was newly enrolled this quarter: Newly Enrolled Households-Section A
  - No, household was previously enrolled: Continuing Households-Section A

Minnesota Department of Health  
Family Home Visiting  
PO Box 64975  
St. Paul, MN 55164-0975  
[www.health.state.mn.us](http://www.health.state.mn.us)

03/23/2023