



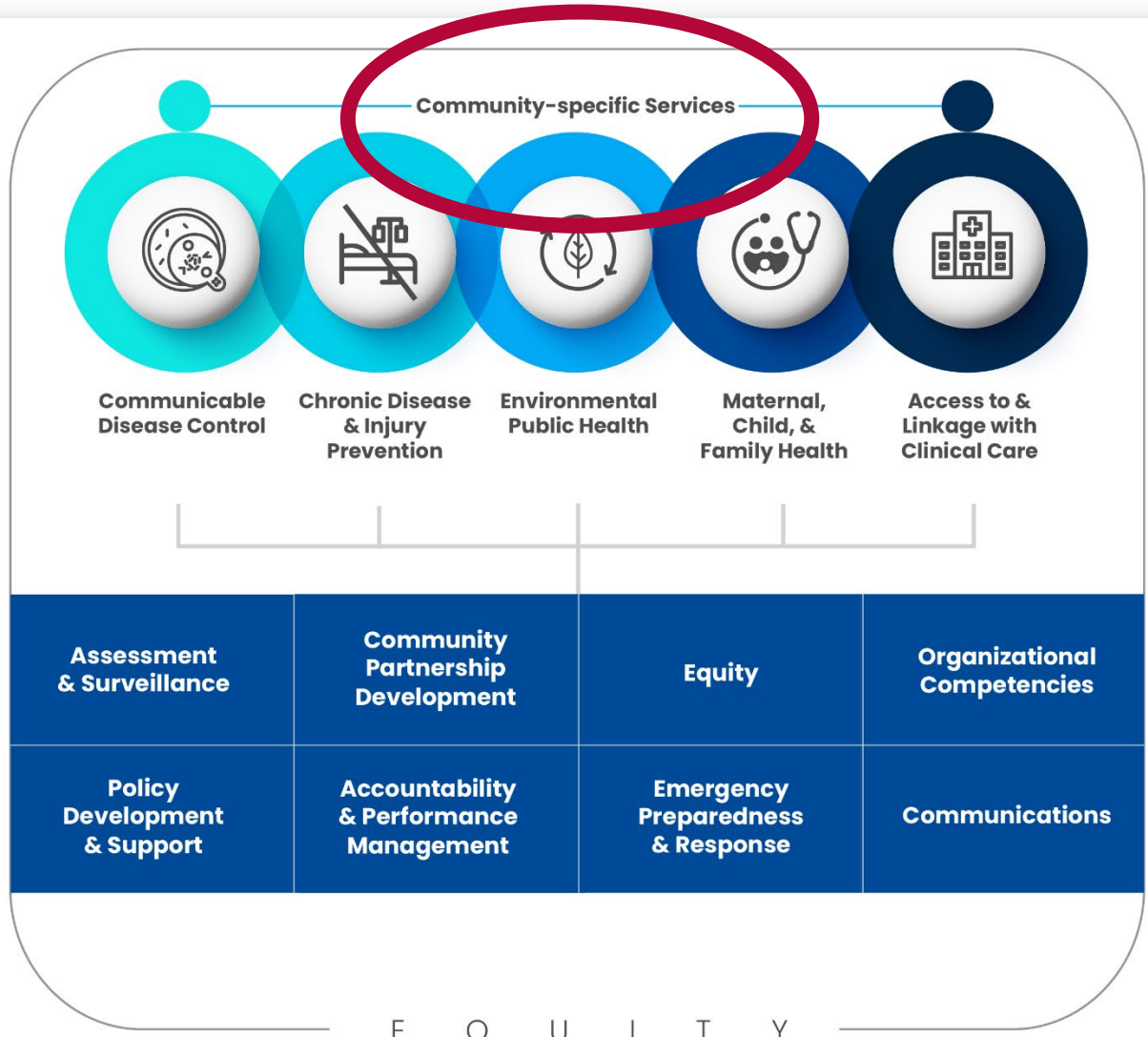
FPHR Community of Practice 7.10.24 Community-specific Services

Linda Kopecky | System Transformation Planner

This Space

A community of practice is a group of people who share a concern or a passion for something they do and learn how to do it better as they interact regularly.

Foundational Areas



Today's topic: Community-specific Services

This space is for...

- Informal conversations
- Increasing general knowledge
- Sharing ideas and challenges
- Wrestling with specific issues
- Bringing in subject matter experts
- Celebrating differences



This space is NOT for...

- Making decisions
- Judgements based on experience, geography, perspective, or other
- Specific questions about funding streams
- Excluding people or ideas





Introductions and welcome

Name (pronouns)

Agency/Area

Something that we do in our
public health setting that
doesn't happen anywhere else

Share this in the chat!





Pick a responsibility (prior to the meeting) and identify issues to discuss and/or SMEs to invite

The flow of our Community of Practice meetings



Identifying takeaways for meeting notes and picking the next topic



Review the basics of the responsibility from the framework and PHAB summary document



Unpacking! Conversations about the responsibility using a variety of engagement tools



Sharing and summarizing conversations, making connections, identifying areas for future learning or discussion



Pick a responsibility (prior to the meeting) and identify issues to discuss and/or SMEs to invite



Review the basics of the responsibility from the framework and PHAB summary document

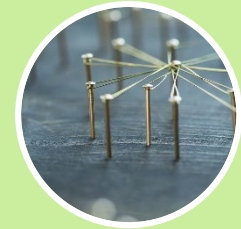
The flow of our Community of Practice meetings



Unpacking! Conversations about the responsibility using a variety of engagement tools

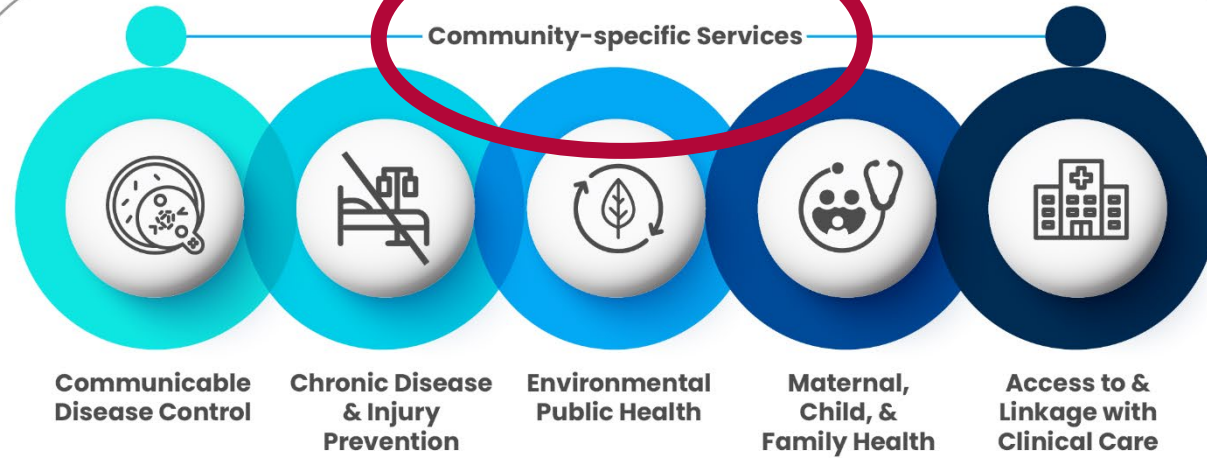


Identifying takeaways for meeting notes and picking the next topic



Sharing and summarizing conversations, making connections, identifying areas for future learning or discussion

Foundational Areas



Foundational Capabilities

Assessment & Surveillance	Community Partnership Development	Equity	Organizational Competencies
Policy Development & Support	Accountability & Performance Management	Emergency Preparedness & Response	Communications

E Q U I T Y

Community-specific Services

Local protections and services that are unique to the needs of a community.

These services are essential to that community's health and vary by jurisdiction.



- Public Health Frameworks
- Tools for Transformation
- FPHS Capacity & Cost Assessment
- 21st Century Learning Community
- Workforce Calculator
- Service and Resource Sharing
- Data Modernization
- Cross-sector
- Center for School Health Innovation & Quality

Public Health Accreditation Board:

administers the national public health accreditation program and reports to the PHAB Center for Innovation. Our mission is to advance and transform public health practice by championing performance improvement, strong infrastructure, and innovation.

[LEARN MORE](#)



What does our national partner say?

[Home - Public Health Accreditation Board \(phaboard.org\)](https://phaboard.org)

Examples from the PHAB “Operational Definitions”

[FPHS-Operational-Definitions.pdf \(phaboard.org\)](https://phaboard.org/FPHS-Operational-Definitions.pdf)

Medicaid and Public Insurance Services

Oral Health Care Services

(related to provision and delivery of oral healthcare and population-based health programs)

Other Entitlement Programs

Emergency Management Services and Trauma Services

Rural Health Care

(related to provision and delivery of clinical services)

Other Social Services

Home Health Care; Aging- and Disability-related Health Care Services

Other Clinical Care

(such as free care, migrant health, jail health, minority health, mental/behavioral health, substance abuse treatment)

Environmental Protection



Pick a responsibility (prior to the meeting) and identify issues to discuss and/or SMEs to invite



Review the basics of the responsibility from the framework and PHAB summary document

The flow of our Community of Practice meetings



Identifying takeaways for meeting notes and picking the next topic



Unpacking! Conversations about the responsibility using a variety of engagement tools

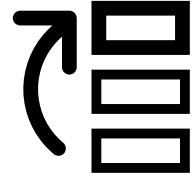


Sharing and summarizing conversations, making connections, identifying areas for future learning or discussion

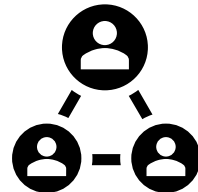


Small Group Discussions

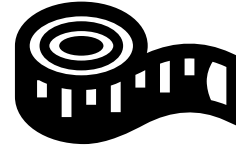
What seems to be public health activities that are very important but not quite foundational in a statewide sense?



How might differentiating what is community-specific and what is foundational across the state affect funding, staffing, or training?

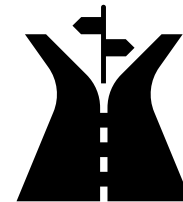


**Small
Group
Discussion**



Are they being measured? How do we know we are performing them well?

What are some decision points that help us differentiate these community-specific activities from those deemed foundational (cross cutting skills/capabilities or program specific areas)?





Pick a responsibility (prior to the meeting) and identify issues to discuss and/or SMEs to invite



Review the basics of the responsibility from the framework and PHAB summary document



Unpacking! Conversations about the responsibility using a variety of engagement tools

The flow of our Community of Practice meetings



Identifying takeaways for meeting notes and picking the next topic



Sharing and summarizing conversations, making connections, identifying areas for future learning or discussion



Pick a responsibility (prior to the meeting) and identify issues to discuss and/or SMEs to invite



Review the basics of the responsibility from the framework and PHAB summary document

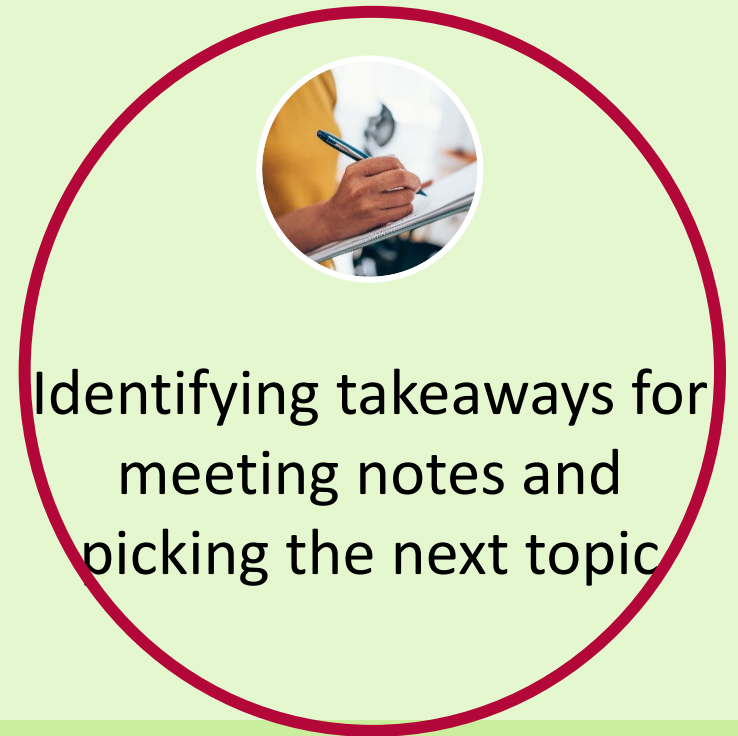


Unpacking! Conversations about the responsibility using a variety of engagement tools



Sharing and summarizing conversations, making connections, identifying areas for future learning or discussion

The flow of our Community of Practice meetings



Identifying takeaways for meeting notes and picking the next topic

Thank You!

Linda Kopecky

linda.kopecky@state.mn.us