

A traditional Japanese garden scene. In the foreground, a three-tiered stone lantern sits on a rocky base. Behind it, a small waterfall cascades over dark rocks. The garden is filled with various plants, including a large, gnarled pine tree and several smaller, manicured shrubs. The background is a dense forest of tall trees. A large, semi-transparent blue circle is overlaid on the right side of the image, containing white text.

FPHR Community
of Practice 4.9.25

Communicable
Disease Control

This Space

A community of practice is a group of people who share a concern or a passion for something they do and learn how to do it better as they interact regularly.

This space is for...

- Informal conversations
- Increasing general knowledge
- Sharing ideas and challenges
- Wrestling with specific issues
- Bringing in subject matter experts
- Celebrating differences

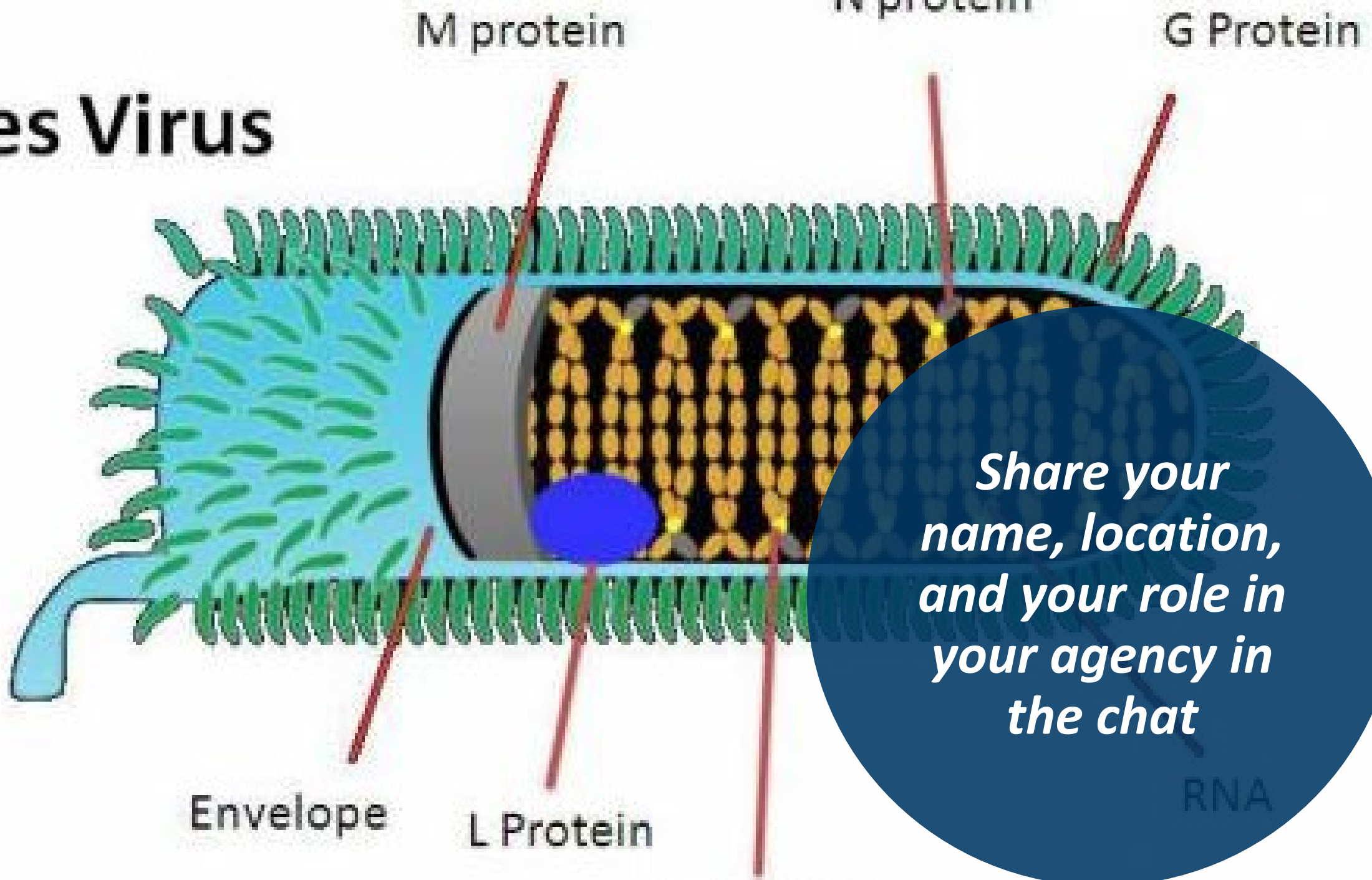


This space is NOT for...

- Making decisions
- Judgements based on experience, geography, perspective, or other
- Specific questions about funding streams
- Excluding people or ideas



Rabies Virus



*Share your
name, location,
and your role in
your agency in
the chat*



Pick a responsibility (prior to the meeting) and identify issues to discuss and/or SMEs to invite

The flow of our Community of Practice meetings



Identifying takeaways for meeting notes and picking the next topic



Review the basics of the responsibility from the framework and PHAB summary document



Unpacking! Conversations about the responsibility using a variety of engagement tools



Sharing and summarizing conversations, making connections, identifying areas for future learning or discussion



Pick a responsibility (prior to the meeting) and identify issues to discuss and/or SMEs to invite

The flow of our Community of Practice meetings



Identifying takeaways for meeting notes and picking the next topic



Review the basics of the responsibility from the framework and PHAB summary document

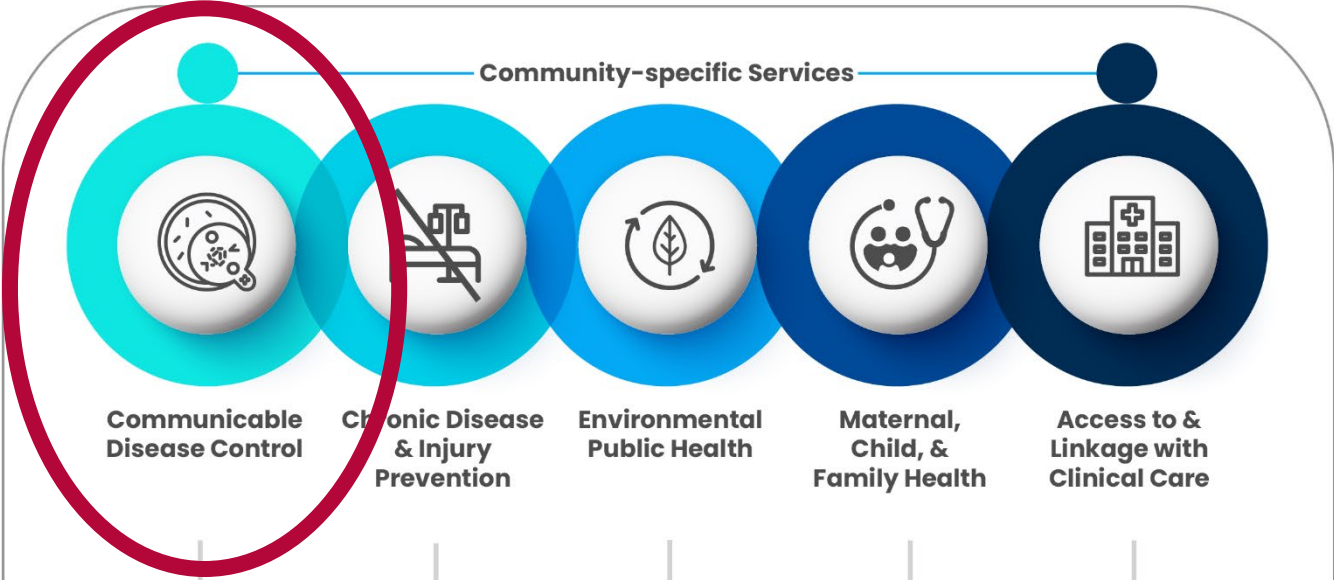


Unpacking! Conversations about the responsibility using a variety of engagement tools



Sharing and summarizing conversations, making connections, identifying areas for future learning or discussion

**Foundational
Areas**



**Foundational
Capabilities**

Assessment & Surveillance	Community Partnership Development	Equity	Organizational Competencies
Policy Development & Support	Accountability & Performance Management	Emergency Preparedness & Response	Communications

E Q U I T Y

Communicable Disease Control



Provide timely, accurate, relevant information related to communicable disease control



Identify partners, develop a plan



Receive lab reports, conduct disease investigations, recognize and respond to outbreaks



Assure capacity for identification and characterization of causative agents of diseases



Coordinate and integrate categorically funded services



Pick a responsibility (prior to the meeting) and identify issues to discuss and/or SMEs to invite

The flow of our Community of Practice meetings



Identifying takeaways for meeting notes and picking the next topic




Review the basics of the responsibility from the framework and PHAB summary document



Unpacking! Conversations about the responsibility using a variety of engagement tools



Sharing and summarizing conversations, making connections, identifying areas for future learning or discussion



What are major activities of
YOUR agency around
communicable disease control?

Where do you rely on
partners for prevention,
control, or response?

Small Group Discussions



Pick a responsibility (prior to the meeting) and identify issues to discuss and/or SMEs to invite

The flow of our Community of Practice meetings



Identifying takeaways for meeting notes and picking the next topic



Review the basics of the responsibility from the framework and PHAB summary document



Unpacking! Conversations about the responsibility using a variety of engagement tools



Sharing and summarizing conversations, making connections, identifying areas for future learning or discussion



Pick a responsibility (prior to the meeting) and identify issues to discuss and/or SMEs to invite

The flow of our Community of Practice meetings



Identifying takeaways for meeting notes and picking the next topic



Review the basics of the responsibility from the framework and PHAB summary document



Unpacking! Conversations about the responsibility using a variety of engagement tools



Sharing and summarizing conversations, making connections, identifying areas for future learning or discussion

Thank You!

Linda Kopecky

linda.kopecky@state.mn.us