

# Health Care Spending, Prices, and Utilization in Minnesota: 2018 to 2022

SUPPLEMENT

DECEMBER 2024



The exhibits in this Supplement present estimates of health care spending from 2018 through 2022 among Minnesotans, ages 64 and younger, who have commercial health insurance through an employer or purchase health insurance on their own, including through Minnesota’s health insurance exchange, MNsure.

## Exhibit S-1: Cumulative Percentage Change in Health Care Spending, Prices, and Utilization, 2018 to 2022

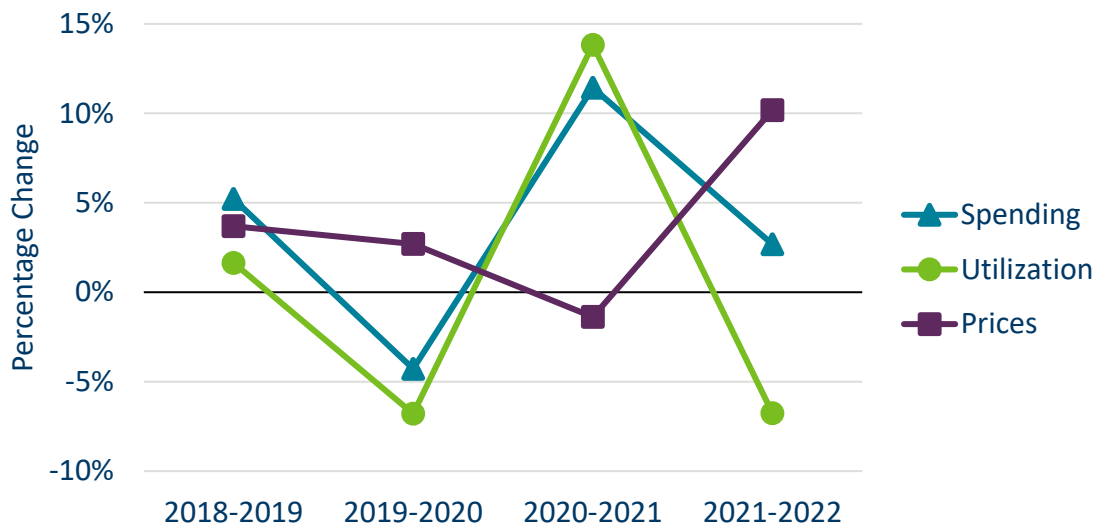
Exhibit S-1 contains the data displayed in Figure 1 in the brief.

Year	Spending	Prices	Utilization
2018	N/A	N/A	N/A
2019	5.2%	3.7%	1.6%
2020	0.7%	6.5%	-5.3%
2021	12.2%	4.8%	7.6%
2022	15.2%	15.3%	0.6%

Source: Health Economics Program analysis of data from the Minnesota All Payer Claims Database, Extract 26.

### Exhibit S-2: Year-Over-Year Percentage Change in Health Care Spending, Prices, and Utilization, 2018 to 2022

Exhibit S-2 provides an alternative view of the data shown in Figure 1 and Exhibit S-1, displaying year-over-year percentage change. This view illustrates the relationship between changes in utilization and prices and the corresponding changes in spending.



Source: Health Economics Program analysis of data from the Minnesota All Payer Claims Database, Extract 26.

### Exhibit S-3: Year-Over-Year Percentage Change in Health Care Spending, Prices, and Utilization, 2018 to 2022

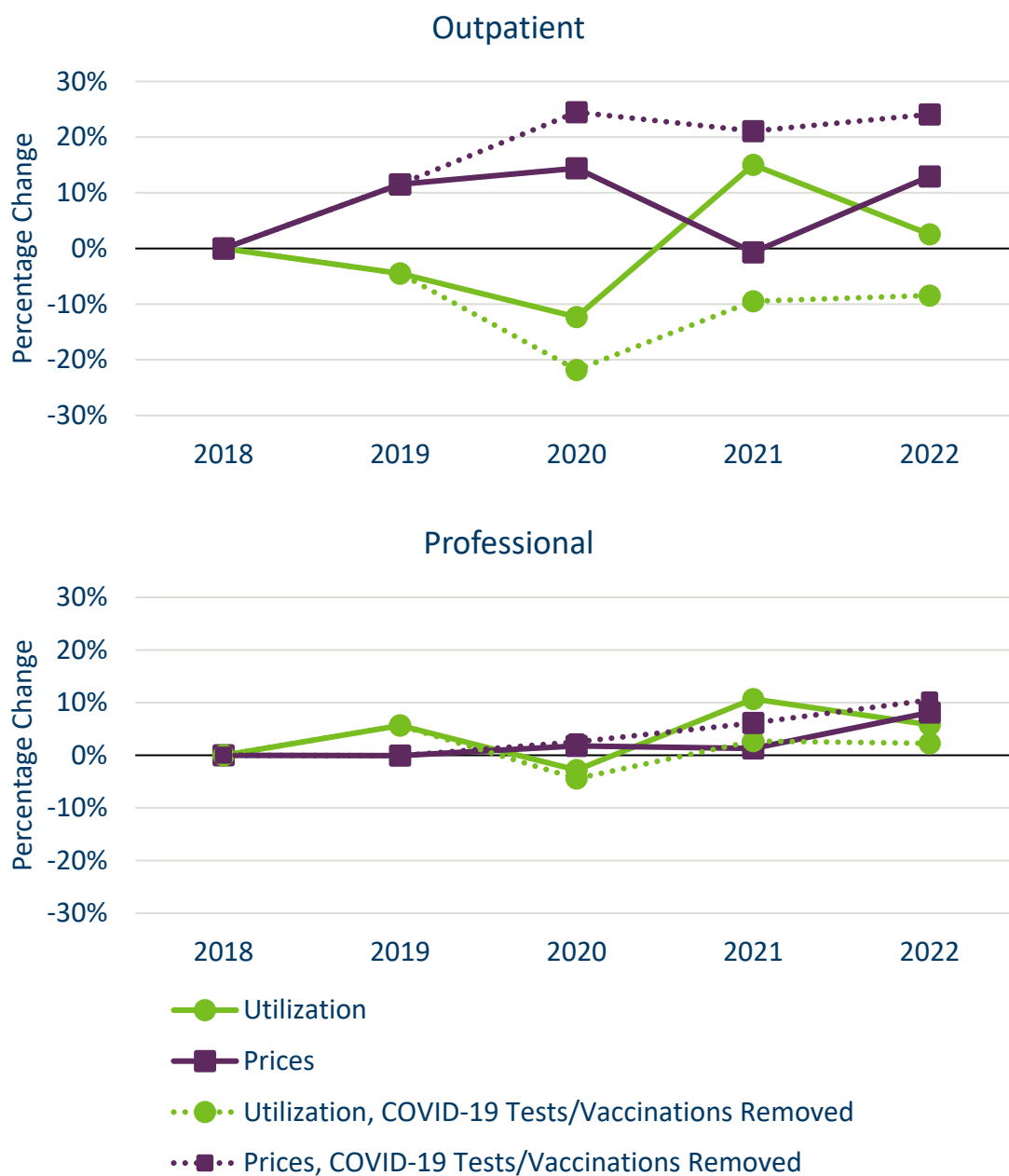
Exhibit S-3 contains the data displayed in Exhibit S-2.

Year	Spending	Prices	Utilization
2018-2019	5.2%	3.7%	1.6%
2019-2020	-4.3%	2.7%	-6.8%
2020-2021	11.4%	-1.4%	13.8%
2021-2022	2.7%	10.2%	-6.8%

Source: Health Economics Program analysis of data from the Minnesota All Payer Claims Database, Extract 26.

### Exhibit S-4: Cumulative Percentage Change in Outpatient and Professional Prices and Utilization, With and Without Codes for COVID-19 Testing and Vaccination, 2018 to 2022

Exhibit S-4 displays the cumulative percentage change in prices and utilization for the outpatient and professional categories (the solid lines). Additionally, it displays the cumulative percentage change in prices and utilization in these categories if COVID-19 tests and vaccines are excluded (the dashed lines).



Source: Health Economics Program analysis of data from the Minnesota All Payer Claims Database, Extract 26.

**Exhibit S-5: Cumulative Percentage Change in Outpatient and Professional Spending Prices and Utilization, With and Without Codes for COVID-19 Testing and Vaccination, 2018 to 2022**

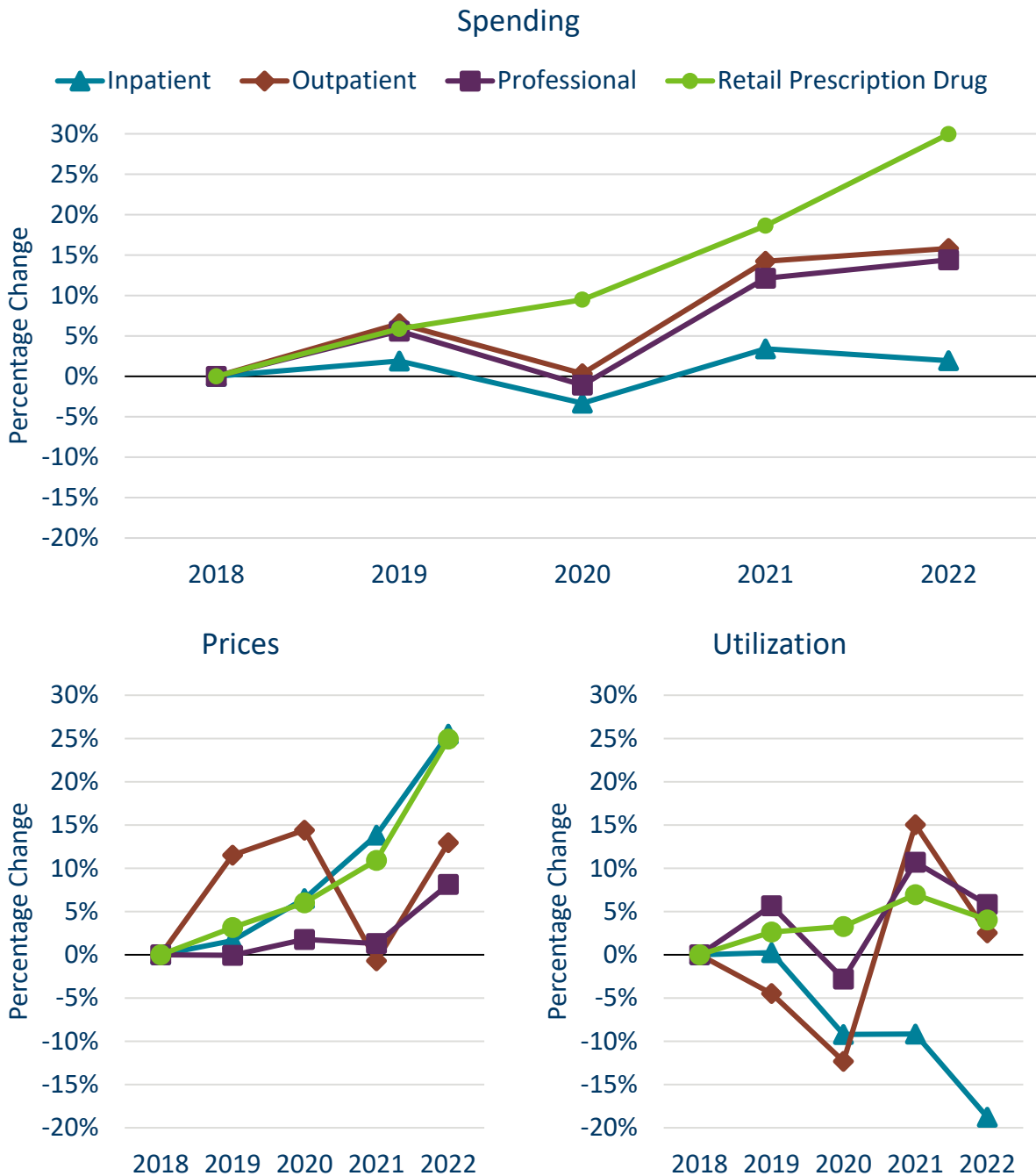
Exhibit S-5 contains the data displayed in Exhibit S-4.

<b>Category</b>	<b>2018</b>	<b>2019</b>	<b>2020</b>	<b>2021</b>	<b>2022</b>
Utilization, Outpatient	N/A	-4.5%	-12.3%	15.0%	2.5%
Utilization, Outpatient, COVID-19 Tests/Vaccinations Removed	N/A	N/A	-21.8%	-9.5%	-8.5%
Utilization, Professional	N/A	5.7%	-2.8%	10.7%	5.8%
Utilization, Professional, COVID-19 Tests/Vaccinations Removed	N/A	N/A	-4.4%	2.7%	2.3%
Price, Outpatient	N/A	11.5%	14.4%	-0.7%	13.0%
Price, Outpatient, COVID-19 Tests/Vaccinations Removed	N/A	N/A	24.5%	21.1%	24.1%
Price, Professional	N/A	-0.1%	1.8%	1.3%	8.1%
Price, Professional, COVID-19 Tests/Vaccinations Removed	N/A	N/A	2.5%	6.2%	10.5%

Source: Health Economics Program analysis of data from the Minnesota All Payer Claims Database, Extract 26.

**Exhibit S-6: Cumulative Percentage Change in Health Care Spending, Prices, and Utilization by Service Category<sup>1</sup>, 2018 to 2022**

Exhibit S-6 displays the cumulative percentage change in spending, prices, and utilization, split into the four service categories used in this analysis: Inpatient, Outpatient, Professional, and Retail Prescription Drug.



Source: Health Economics Program analysis of data from the Minnesota All Payer Claims Database, Extract 26.

HEALTH CARE SPENDING, PRICES, AND UTILIZATION IN MINNESOTA:  
2018 TO 2022

**Exhibit S-7: Cumulative Percentage Change in Health Care Spending, Prices, and Utilization by Service Category, 2018 to 2022**

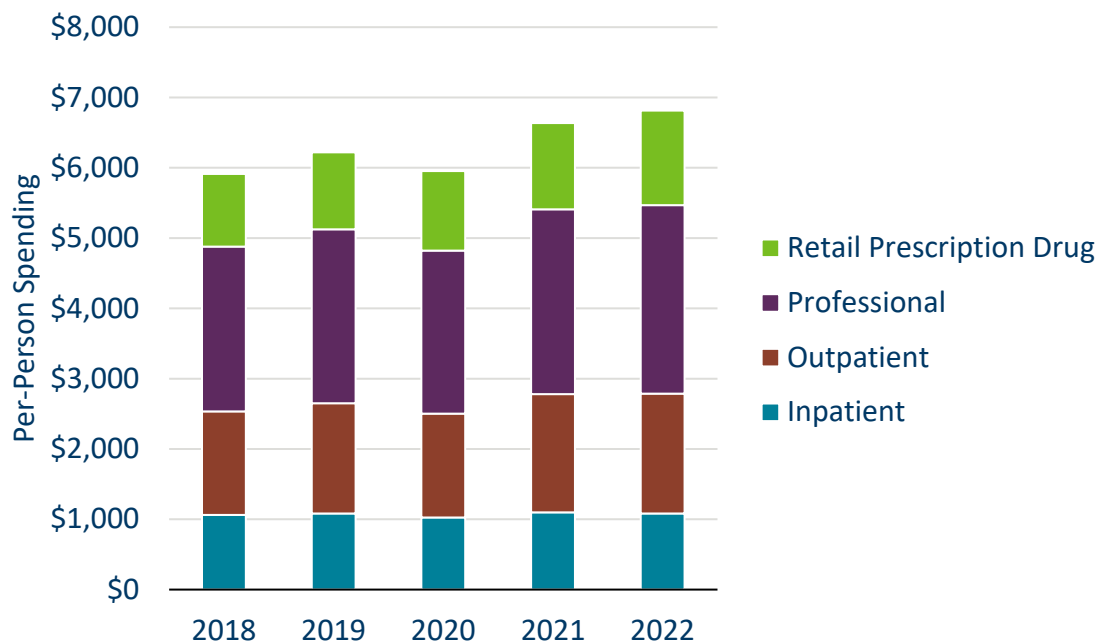
Exhibit S-7 contains the data displayed in Exhibit S-6.

<b>Category</b>	<b>2018</b>	<b>2019</b>	<b>2020</b>	<b>2021</b>	<b>2022</b>
Spending, Inpatient	N/A	1.9%	-3.3%	3.4%	1.9%
Spending, Outpatient	N/A	6.5%	0.3%	14.2%	15.8%
Spending, Professional	N/A	5.6%	-1.1%	12.1%	14.4%
Spending, Retail Prescription Drug	N/A	5.9%	9.5%	18.6%	30.0%
Prices, Inpatient	N/A	1.6%	6.5%	13.8%	25.5%
Prices, Outpatient	N/A	11.5%	14.4%	-0.7%	13.0%
Prices, Professional	N/A	-0.1%	1.8%	1.3%	8.1%
Prices, Retail Prescription Drug	N/A	3.2%	6.0%	10.9%	24.9%
Utilization, Inpatient	N/A	0.3%	-9.2%	-9.2%	-18.8%
Utilization, Outpatient	N/A	-4.5%	-12.3%	15.0%	2.5%
Utilization, Professional	N/A	5.7%	-2.8%	10.7%	5.8%
Utilization, Retail Prescription Drug	N/A	2.6%	3.3%	7.0%	4.0%

Source: Health Economics Program analysis of data from the Minnesota All Payer Claims Database, Extract 26.

### Exhibit S-8: Components of Per-Person Spending by Service Category, 2018 to 2022

Exhibit S-8 displays the data shown in Figure 2 of the brief, with the medical portion split into the three component categories: inpatient, outpatient, and professional.



Source: Health Economics Program analysis of data from the Minnesota All Payer Claims Database, Extract 26.

### Exhibit S-9: Components of Per-Person Spending by Service Category, 2018 to 2022

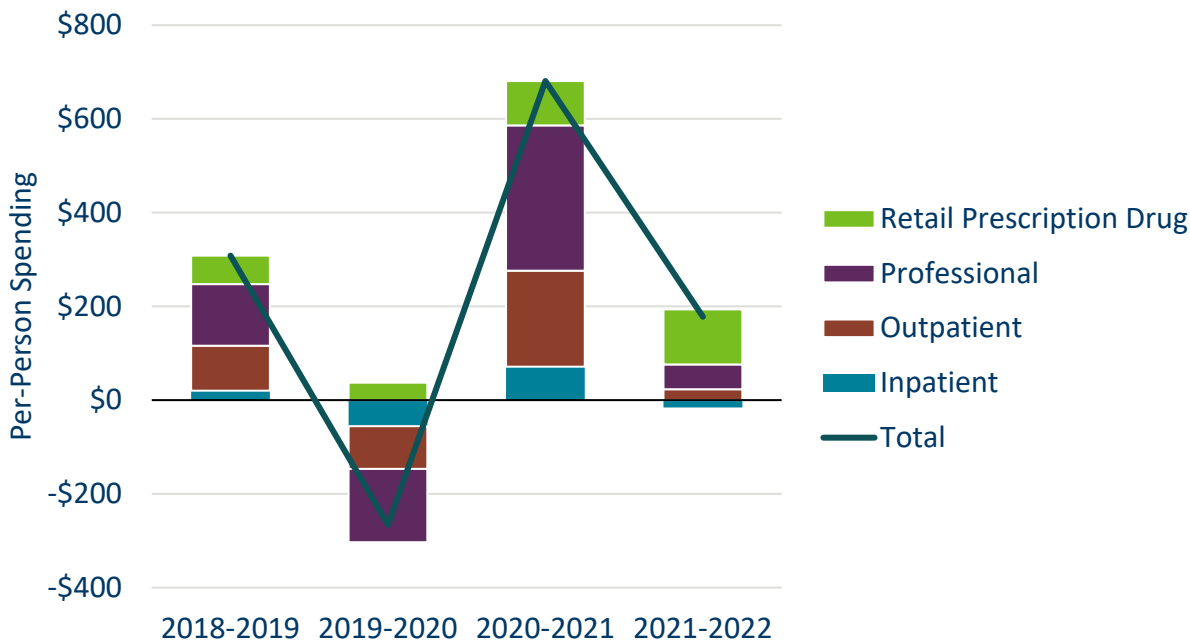
Exhibit S-9 contains the data displayed in Exhibit S-8 above.

Spending Category	2018	2019	2020	2021	2022
Total	\$5,912	\$6,220	\$5,954	\$6,635	\$6,813
Inpatient	\$1,062	\$1,082	\$1,027	\$1,098	\$1,083
Outpatient	\$1,472	\$1,568	\$1,476	\$1,681	\$1,704
Professional	\$2,344	\$2,475	\$2,319	\$2,629	\$2,682
Retail Prescription Drug	\$1,034	\$1,095	\$1,132	\$1,227	\$1,344

Source: Health Economics Program analysis of data from the Minnesota All Payer Claims Database, Extract 26.

### Exhibit S-10: Year-Over-Year Change in Per-Person Spending by Service Category, 2018 to 2022

Exhibit S-10 provides another look at the data shown in Exhibits S-8 and S-9 and Figure 2 in the brief. It displays the year-over-year change in spending for each of the four service categories.



Source: Health Economics Program analysis of data from the Minnesota All Payer Claims Database, Extract 26.

### Exhibit S-11: Year-Over-Year Change in Per-Person Spending by Service Category, 2018 to 2022

Exhibit S-7 contains the data displayed in Exhibit S-6.

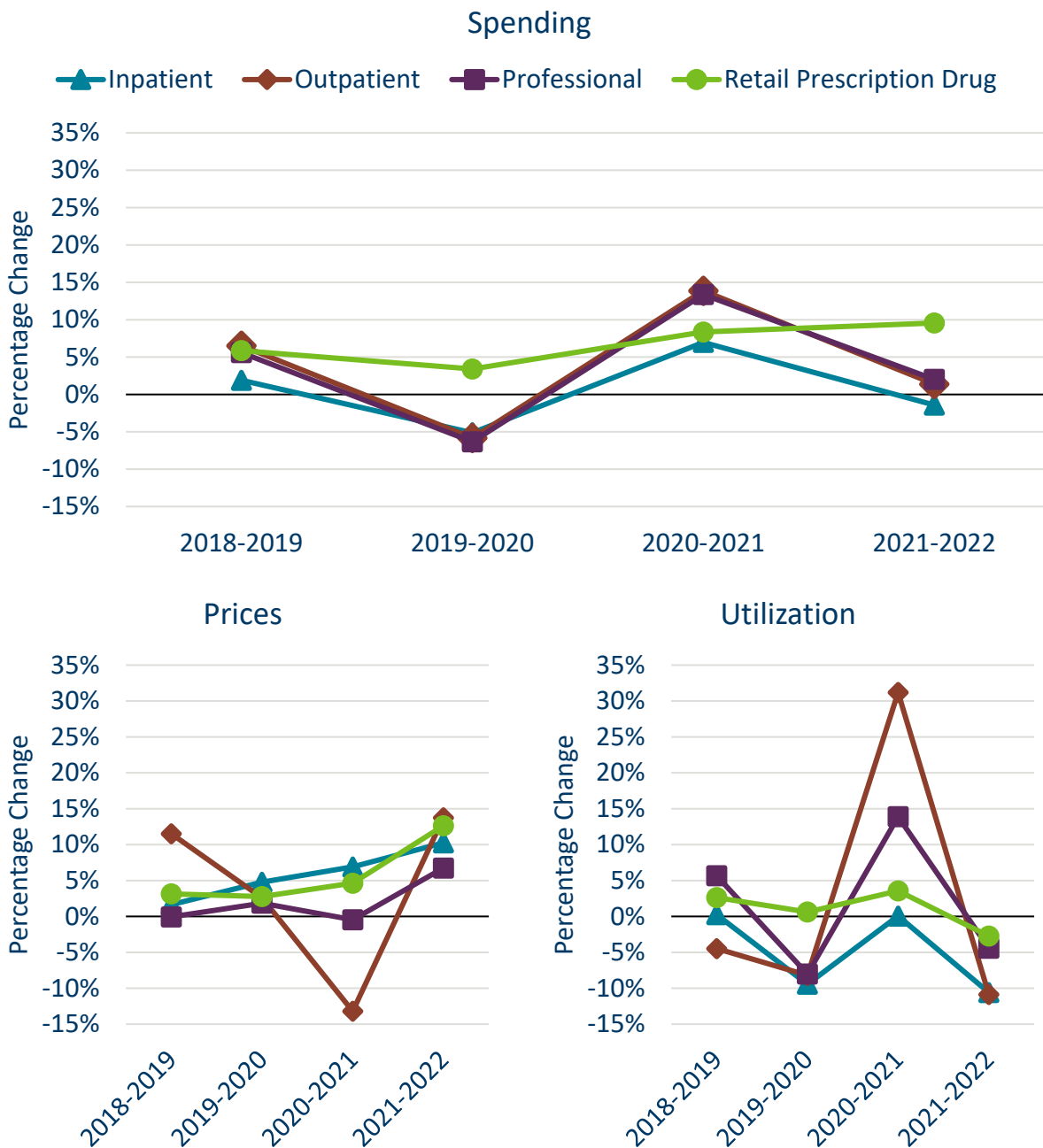
Service Category	2018-2019	2019-2020	2020-2021	2021-2022
Total	\$308	-\$266	\$681	\$178
Inpatient	\$20	-\$56	\$72	-\$16
Outpatient	\$96	-\$91	\$205	\$23
Professional	\$131	-\$157	\$310	\$53
Retail Prescription Drug	\$61	\$37	\$95	\$117

Source: Health Economics Program analysis of data from the Minnesota All Payer Claims Database, Extract 26.



**Exhibit S-12: Year-Over-Year Percentage Change in Per-Person Spending, Prices, and Utilization by Service Category, 2018 to 2022**

Exhibit S-12 displays the year-over-year percentage change in spending, prices, and utilization, split into the four service categories used in this analysis: Inpatient, Outpatient, Professional, and Retail Prescription Drug. In the spending chart, percentage growth is similar for outpatient/professional.



Source: Health Economics Program analysis of data from the Minnesota All Payer Claims Database, Extract 26.

**Exhibit S-13: Year-Over-Year Change in Per-Person Spending, Prices, and Utilization by Service Category, 2018 to 2022**

Exhibit S-7 contains the data displayed in Exhibit S-6.

Category	2018-2019	2019-2020	2020-2021	2021-2022
Spending, Inpatient	1.9%	-5.1%	7.0%	-1.4%
Spending, Outpatient	6.5%	-5.8%	13.9%	1.4%
Spending, Professional	5.6%	-6.3%	13.4%	2.0%
Spending, Retail Prescription Drug	5.9%	3.4%	8.4%	9.6%
Prices, Inpatient	1.6%	4.8%	6.9%	10.3%
Prices, Outpatient	11.5%	2.6%	-13.2%	13.7%
Prices, Professional	-0.1%	1.8%	-0.5%	6.7%
Prices, Retail Prescription Drug	3.2%	2.8%	4.6%	12.6%
Utilization, Inpatient	0.3%	-9.4%	0.1%	-10.6%
Utilization, Outpatient	-4.5%	-8.2%	31.2%	-10.9%
Utilization, Professional	5.7%	-8.0%	13.9%	-4.4%
Utilization, Retail Prescription Drug	2.6%	0.6%	3.6%	-2.7%

Source: Health Economics Program analysis of 2018 to 2022 data from the Minnesota All Payer Claims Database, Extract 26.

Minnesota Department of Health  
Health Economics Program  
PO Box 64882  
St. Paul, MN 55164-0882  
651-201-4520  
[health.hep@state.mn.us](mailto:health.hep@state.mn.us)  
[www.health.state.mn.us/healthconomics](http://www.health.state.mn.us/healthconomics)

To obtain this information in a different format, call: 651-201-4520.

---

<sup>1</sup> Claims for retail prescription drugs include prescriptions written by a provider and filled at a pharmacy. They do not include drugs administered by providers or over the counter medications. The prices of retail prescription drugs are recorded in MN APCD claims data before manufacturer rebates are applied, should any be available.